

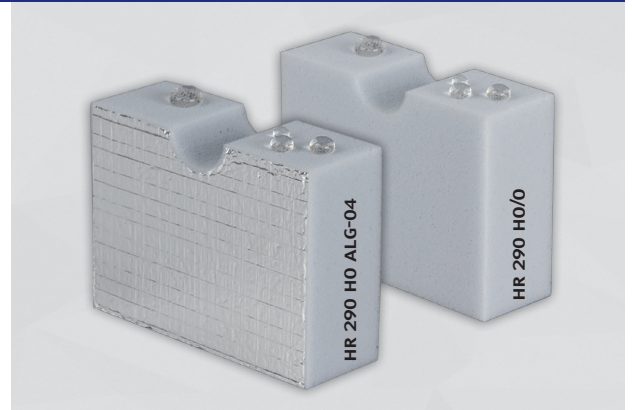


## CELLO® HR 290 HO/O • HR 290 HO ALG-04

**Cello® HR 290 HO/O:** Soft grey melamine-resin foam, oil- and water-repellent, for noise absorption and thermal insulation purposes.

**Cello® HR 290 HO ALG-04:** Laminated with a silver-colored aluminum foil with scrim reinforcement for enhanced tear resistance.

Applications: Heating/ventilation/AC systems, machine construction, rail vehicles



### TECHNICAL DATA

#### FLAMMABILITY



- ▶ FMVSS 302, DIN 75 200, fulfilled
- ▶ ISO 3795, burning rate < 100 mm/min
- ▶ EN 45545-2: appendix R1 + R7 + R17, HL 2 fulfilled (≥ 5 mm) (HR 290 HO/O)
- ▶ EN 45545-2: appendix R1, HL 3 fulfilled (5-100 mm) (HR 290 HO ALG-04)
- ▶ DIN 4102, tested according to B1 (10-60 mm) (HR 290 HO/O SK)
- ▶ DIN EN 13501-1: C-S2, d0 (50 mm) (HR 290 HO/O SK)
- ▶ NFPA 130: ASTM E 162 and 662 fulfilled (HR 290 HO/O SK)
- ▶ ASTM E 1354 fulfilled (HR 290 HO/O SK)
- ▶ Bombardier SMP 800-C (HR 290 HO/O SK)

#### TEMPERATURE RESISTANCE

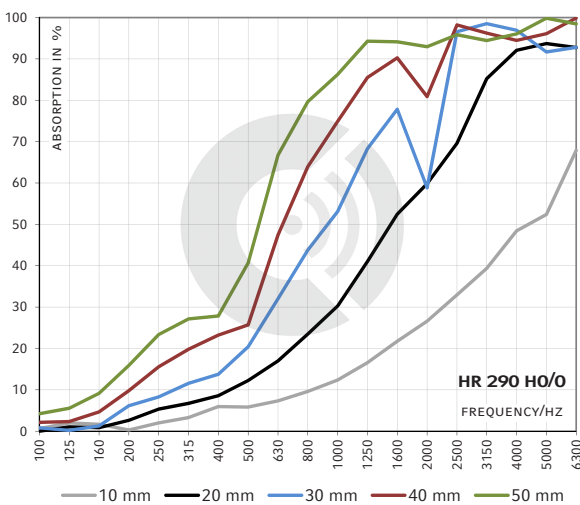
- ▶ HR 290 HO/O: -50°C to +180°C
- ▶ HR 290 HO ALG-04: -50°C to +140°C

**THERMAL CONDUCTIVITY OF MELAMINE FOAM / EN 12667** ≤ 0.035 W/(m·K) at 10°C

**DENSITY OF MELAMINE FOAM / DIN EN ISO 845** 9 ± 1.5 kg/m<sup>3</sup>

**CHEMICAL RESISTANCE / DIN 53428** Resistance against light fuel, paraffin oil, glycerin and other chemicals

### IMPEDANCE TUBE / DIN 10 534-2

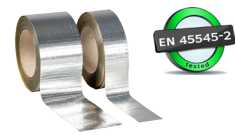


DIMENSIONS			
PRODUCT	THICKNESS [mm]	THICKNESS TOLERANCE [mm]	SHEETS* [mm]
HR 290 HO/O HR 290 HO ALG-04	5, 10, 20, 30, 40, 50	± 1	1050 X 1250 or 2100 X 1250

Other thicknesses / dimensions on request. Ready-to-use parts according to your specifications or drawing.

\*Untrimmed: Effective dimensions guaranteed as ordered, may be exceeded by some layers (foam, film, non-woven etc.).

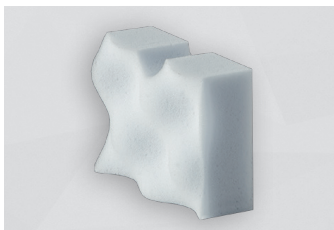
MORE INFORMATION	
<b>BENEFITS</b>	<ul style="list-style-type: none"> <li>▶ Oil- and water-repellent finish</li> <li>▶ Good fire safety rating</li> <li>▶ High temperature resistance</li> <li>▶ Low thermal conductivity</li> <li>▶ The aluminum foil completely prevents the penetration of dust and liquids into the foam (HR 290 HO ALG-04)</li> <li>▶ Reflects heat radiation (HR 290 HO ALG-04)</li> </ul>
<b>ADVICES</b>	<ul style="list-style-type: none"> <li>▶ The oil- and water-repellent finish may lead to a slightly mottled surface appearance of the foam</li> <li>▶ For sealing trimmed edges, we recommend our adhesive tape Cello<sup>®</sup> ALU-04. Adhesive tape tested acc. to EN 45545-2, meets requirements R1 + R7 + R17, HL 3</li> </ul>



OPTIONS (FURTHER OPTIONS ON REQUEST)	
NK	no self-adhesive equipment
SK	with self-adhesive finish
HR 290 HO NOPPE	foam material with a 3D-undulated surface that allows any condensate to drain away. Thickness: 20, 30, 40 and 50 mm.

**FLAMMABILITY**

- ▶ FMVSS 302, DIN 75 200, fulfilled
- ▶ ISO 3795, burning rate < 100 mm/min



HR 290 HO NOPPE