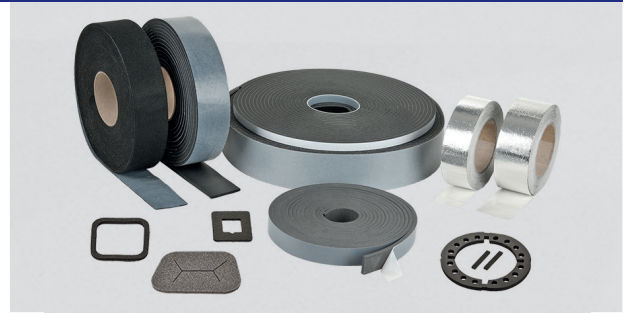




CELLO® GASKETS AND SEALS

Cello® gaskets and sealing products are made from PVC, EPDM, PE, CR, NBR OR SILICONE.

Applications: Machine and industrial plant construction, construction machinery, utility vehicles, buses, rail vehicles, switch cabinets, doors, windows, sheet fabricating industry, tool manufacture, air conditioning systems



TECHNICAL DATA

PRODUCT	DENSITY ISO 845	TEMPERATURE RESISTANCE	HARDNESS SHORE 00	REMARKS / NOTES
EPDM	60-85 kg/m ³	-40°C to +130°C max. +150°C	26-28	<ul style="list-style-type: none"> ▶ Closed-cell ▶ Excellent temperature resistance ▶ High resistance against hot water and steam ▶ Very good chemical resistance, e.g. against alcohols, ketones (e.g. acetone), ester and glycols
EPDM W	100 ± 20 kg/m ³	-40°C to +105°C (+120°C)	19-31	<ul style="list-style-type: none"> ▶ Closed-cell ▶ Very good weathering resistance ▶ Very good chemical resistance ▶ Compared to other Cello® EPDM materials very fine-pored structure
EPDM HD	85-115 kg/m ³	-40°C to +120°C	30-45	<ul style="list-style-type: none"> ▶ Closed-cell ▶ Same base material as for Cello® SEAL EPDM, but with higher density, giving the product better deformation resilience and a high ultimate tensile strength ▶ EPDM is generally inert and prevents the growth of fungus, mildew and algae
EPDM FL	95 kg/m ³	-40°C to +135°C (180°C)	not definable	<ul style="list-style-type: none"> ▶ Semi-closed: The material, which is commonly used in the automotive industry, combines the flexibility (FL) of an open-cell foam with the impermeability of closed-cell foams ▶ Good sound absorption effectiveness ▶ Impermeability assured only for a compression of 70% or higher
NBR	40-70 kg/m ³	-45°C to +85°C max. +110°C	31	<ul style="list-style-type: none"> ▶ Closed-cell ▶ For all areas where the materials are susceptible to get into contact with oils, e.g. motor oil ▶ Exceptionally hard-wearing, extremely resistant against deformation
CR HD	175 ± 25 kg/m ³	-40°C to +100°C	40-55	<ul style="list-style-type: none"> ▶ Closed-cell ▶ High mechanical resistance ▶ Good weathering resistance, good resistance against oil and chemicals ▶ Not available as rolls
PE	28 kg/m ³	-50°C to +100°C	50	<ul style="list-style-type: none"> ▶ Closed-cell, cross-linked ▶ Compared to all other materials, very fine-pored structure for minimized water absorption ▶ Resistance against extremely low temperatures
PVC	120 kg/m ³	-30°C to +70°C	31	<ul style="list-style-type: none"> ▶ Closed-cell ▶ Very good resistance against chemicals, in particular against most acids and bases ▶ Excellent aging stability and exceptional weathering resistance ▶ Suitable for electrical insulation purposes
SILICONE	SOFT: 200 ± 30 kg/m ³ MEDIUM: 370 ± 30 kg/m ³	-55°C to +200°C	SOFT: 30 MEDIUM: 56	<ul style="list-style-type: none"> ▶ Closed-cell ▶ Excellent sealing effect ▶ High temperature resistance / High ozone and weather resistance ▶ Good resistance against chemicals / AdBlue-resistant

ADVICE

- ▶ The materials are available without or with a self-adhesive layer on one or both faces
For Cello® SEAL EPDM FL, only one face can be equipped with a self-adhesive layer.
- ▶ Roll widths from 5 to 1000 mm (except CR HD).
- ▶ Materials with self-adhesive layers offer a temperature resistance of max. 100°C in the bond line
- ▶ Under thermal load, the material may shrink by up to 5%

MORE INFORMATION

For more information, please consult our "Sealing products" folder or contact the Cellofoam sales representative in your area or our sales back-office in Biberach.

Details and options for our sealing products are also available at www.cellofoam.de